

NOAA's Open House on Nautical Cartography

NOAA's Office of Coast Survey is pleased to announce its first one-day open house in conjunction with the International Cartographic Conference (held in Washington, D.C. at Marriott Wardman Park). The one-day event will focus on nautical cartography, highlighting the field of charting and GIS. It will offer nautical cartography-themed posters, presentations, tours, and exhibits. Participants include industry partners, government agencies, and charting offices from around the world. This event is open to the public.

Date: Friday, July 7, 2017

Time: 9:00 to 15:30

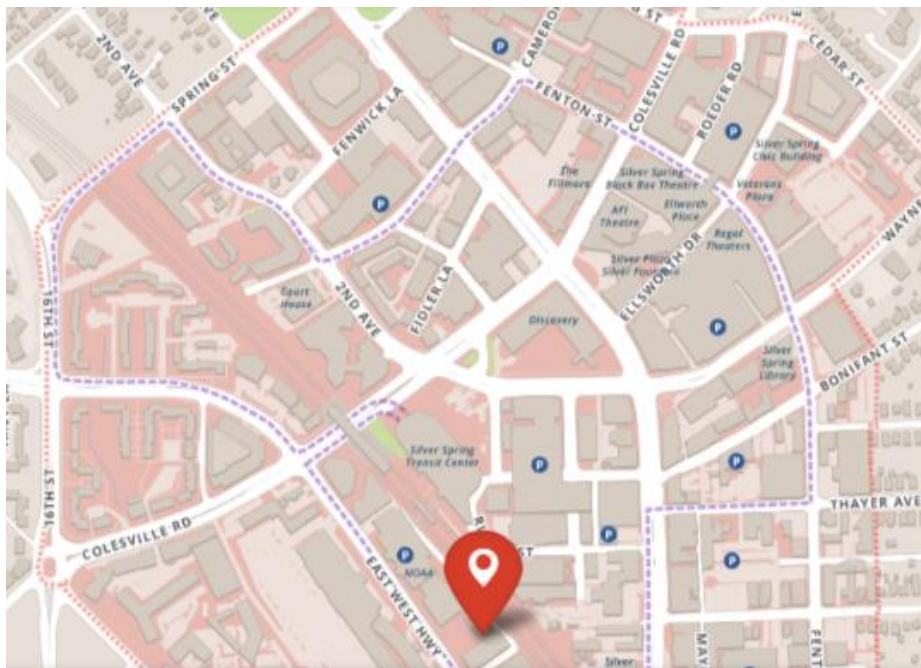
Location: NOAA's Science Center (1301 East-West Hwy, Silver Spring, MD 20910)

Registration: Send your name and organization to nauticalcarto2017@noaa.gov to expedite entry into the NOAA building.

The goals of the open house are:

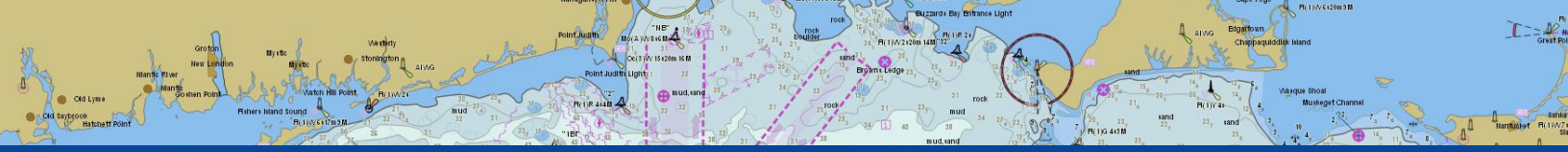
1. Report on current and future activities in cartography and GIS
2. Establish a regional and international network of cartographers in the field of nautical charting.
3. Create more collaborative activities between IHO and ICA members.
4. Identify challenges in generating, producing, maintaining and distributing Raster and Electronic Navigational Charts.

The four main themes for this year's open house include *From Hydrography to Cartography*, *Nautical Products*, *MSDI and Databases*, and *Innovative Cartography*.



Location of the NOAA Science Center, 1301 East-West Hwy Silver Spring, MD 20910.

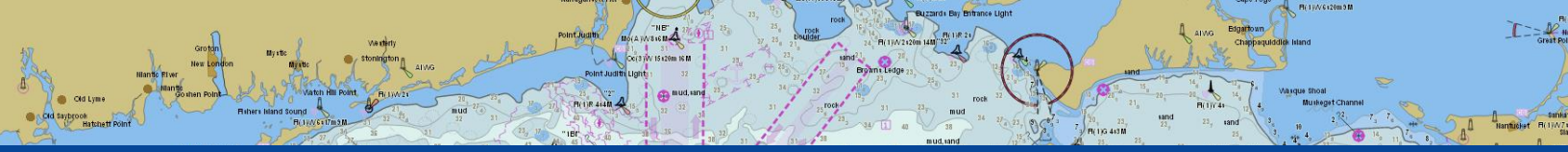




Presentation agenda (9:00 – 15:30)

July 7, 2017	Topic	Presenters
9:00 to 9:05	Welcome	Shachak Pe'eri (NOAA)
9:05 to 9:25	Keynote speaker	T.B.D
9:30 to 10:30	From Hydrography to Cartography	(Session Chair: Shachak Pe'eri)
9:30 to 9:50	Industry contribution to cartographic source data	David Millar (Fugro Palegos)
9:50 to 10:10	Database driven bathymetry	Derrick Peyton (IIC Technologies)
10:10 to 10:30	eHydro: Implementing a BIS	Gavin Shanks (US Army Corps of Engineers)
10:30 to 11:00	Coffee Break	
11:00 to 12:00	Nautical Products	(Session Chair: Karen Hart)
11:00 to 11:20	S-100 testbed software project	Robert Greer (US Navy)
11:20 to 11:40	USACE's IENCs and other charting products	Denise LaDue (US Army Corps of Engineers)
11:40 to 12:00	NOAA's ENC 2.0	John Nyberg (NOAA)
12:00 to 13:00	Lunch Break	
13:00 to 14:00	MSDI and Databases	(Session Chair: John Lowell)
13:00 to 13:20	Arctic MSDI	Sebastian Carisio (NGA / Maritime Safety Office)
13:20 to 13:40	The Western Gulf of Maine (WGOM) bathymetry project	Paul Johnson (UNH)
13:40 to 14:00	Data centricity in support of MSDI	Karen Hart (CARIS)
14:00 to 14:15	Coffee Break	
14:15 to 15:15	Innovative Cartography	(Session Chair: Derrick Peyton)
14:15 to 14:35	Quality Control on ENCs: An RNC approach	Christie Ence and Shachak Pe'eri (NOAA)
14:35 to 14:55	Using Automation Scripts to Normalize Product Portrayal Across a Large Organization	Andrea Lindblad (ESRI)
14:55 to 15:15	Future directions in Nautical Cartography	Ron Furness (IBSC; IIC Technologies)
15:15 to 15:30	Concluding remarks	





Poster Session (10:00 – 10:30; 12:00 – 12:30)

The event offers two 30-minute poster sessions in lightning round format. We recommended that each presenter provide a 2-minute overview, leaving 1 minute for questions. Each 30-minute poster session will contain 10 posters (for a total of 20 posters for the event).

Poster guidelines:

- Each presentation should make a unified, coherent statement.
- Materials, both textual and visual, should be of professional quality and be clearly legible from a distance of four feet (~ 1.2 m).
- Text should be limited to brief statements
- Graphic materials will be displayed on a 3' x 3' (~ 0.9 m x 0.9 m) poster board (landscape-oriented only) supplied by NOAA.
- Handouts on your topic/poster are optional.

Tours (9:00 – 9:30; 12:30 – 13:00)

Two organized tours will be provided at the event. The tours start in the NOAA Science Center and have three main stations:

Marine Chart Division's past and current activities: Meet scientists and marine cartographers to explore and discuss the cartographic methods used to visualize the conditions of the oceans and the atmosphere. This station will focus on NOAA's 200-year charting history.

Science on a Sphere: Cartographic visualizations of oceanic and atmospheric data will be shown on a six-foot sphere, and a tour of the museum will showcase the history of NOAA's support for safe navigation and commerce, deep sea exploration, and management and protection of coastal and ocean resources both locally and across the nation.

Gateway to NOAA: The "Gateway to NOAA" is a new permanent exhibit that features breathtaking imagery, multimedia presentations, and amazing artifacts that illustrate how NOAA has, since its earliest history, sought to increase people's understanding of the land, the sea, and the sky. The exhibit highlights the ways in which NOAA takes the pulse of the planet every day and protects and manages ocean and coastal resources.



NOAA's Science on a Sphere®

